

SUBLISTAR

A3+ STAR IV DTF PRINTER & SHAKER

UPGRADING



DTF INK



Variable Sized
Droplet Technology



Nozzle Resolution



High Durability



DTF-A3+ STAR IV

SPECIFICATION

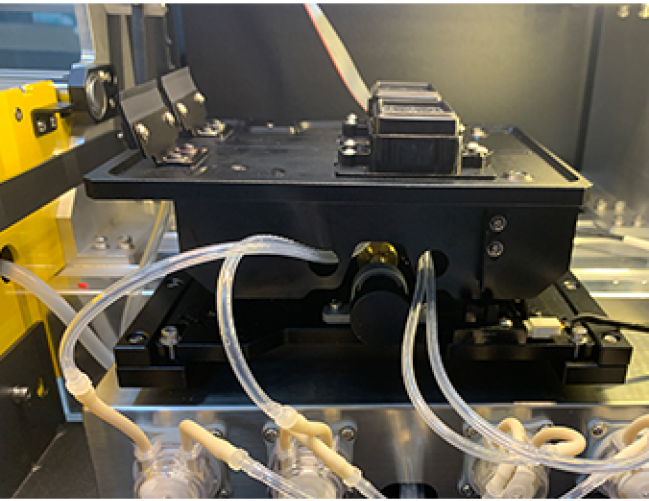
A3+ STAR IV DTF PET Film Inkjet Printer

Model	DTF-A3+ STAR IV	
Print Nozzle	F1080	I3200-A1
Precision / Print speed	4pass: 8m ² /hour	4pass: 10m ² - 15m ² /hour
	6pass: 5m ² /hour	6pass: 6.5m ² - 10m ² /hour
	8pass: 3m ² /hour	8pass: 3.5m ² - 6m ² /hour
Ink	DYE\DTF\ Sublimation	
Maximum Width	300mm	
Print Media	PP Sythentic Paper \ PET Film \ UV DTF	
Print Interface	RJ45 Cable interface	
RIP Software	Hemo Driver / Maintop6.1 / Photoprint / Print Factory	
Power	AC110V / AC220V / 50/60HZ	
Operating Environments	Temperature: 20°C-35°C, Humidity: 35%RH-65%RH	
Dimensions of Printer (L x W x H)	980(L) x 630(W) x 530(H) mm	
Dimensions of Packing (L x W x H)	1100(L) x 680(W) x 760(H) mm	
Net Weight	80KG	
Gross Weight	120KG	

DTF Powder Shaker and Dryer (S8)

Model	S8-300
Operation Mode:	PLC Touch Screen
Oven Temp.:	Adjustable
Voltage:	110v/220v, 3phase, 60Hz
Power:	2kw
Shaker Size:	1500mm L x 720mm W(with Air Filter) x 670mm H
Shaker Weight:	100kg

DETAILS



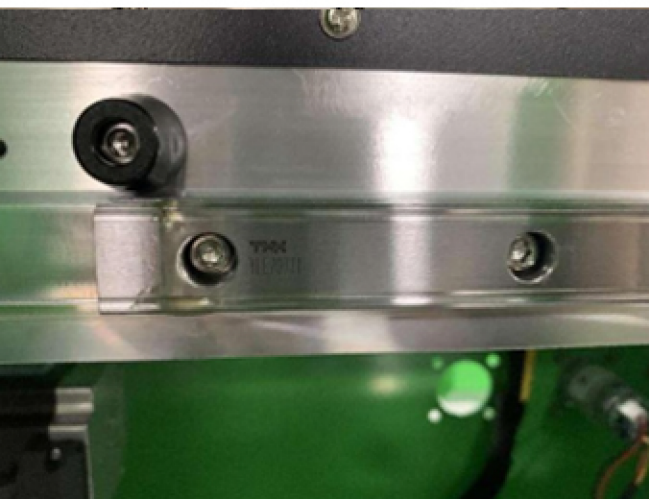
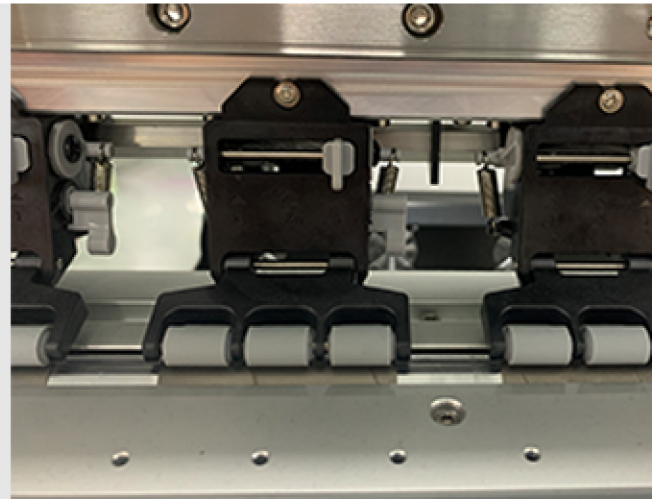
Automatic In-Line Moisturizing System

In order to prevent ink from clogging the nozzle, the ink cap will eject some moisturizer every once in a while to keep the nozzle clean and moist. This is the automatic in-line moisturizing system.

Which can keep the printer nozzle in the best working state, avoid blocking the nozzle hole due to volatilization of solvent, and prolong the service life of the nozzle.

Pinch Roller Adjustable

According to the printing material, adjust the platen support to adjust the pressure of the pressure roller to ensure smooth paper feeding and improve the effect. Which can increase the friction force during paper feeding, make the process more stable and reliable, and avoid indentation and other phenomena during printing. It ensures high printing accuracy during printing and output.



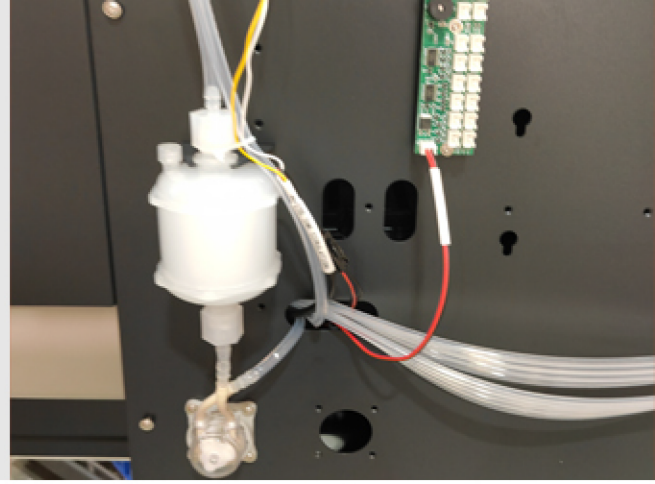
THK Mute Linear Guide

Stable operation and low noise. The friction between the sliders of the silent guide rail is greatly reduced, and the retention of lubricating grease is improved, thus achieving low noise, high speed, long service life and long-term operation without maintenance.

White Ink Circulation & Filtration System

Our imported filter not only effectively intercepts large particles, gels and other impurities, but also allows the required pigment dyes to pass through and remain in the ink.

The imported filter has excellent impurity filtering ability and longer service life.



Front, Middle, Rear Heating Devices

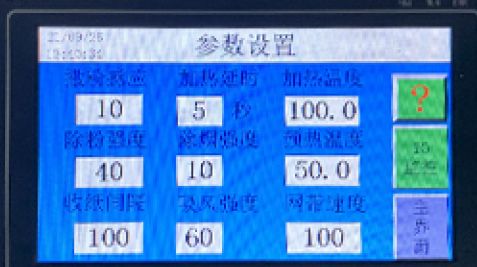
The worktable of the new generation DTF printer is equipped with heating devices in the front, middle and rear directions, which can ensure that the printed pattern becomes dry instantly.

Low Ink Warning

When the ink level is too low, the alarm on the ink bottles will beep to remind you to add ink.



YKHMI

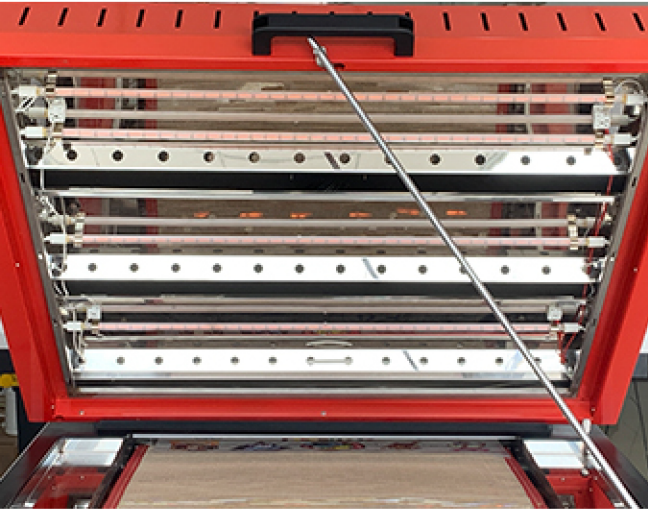
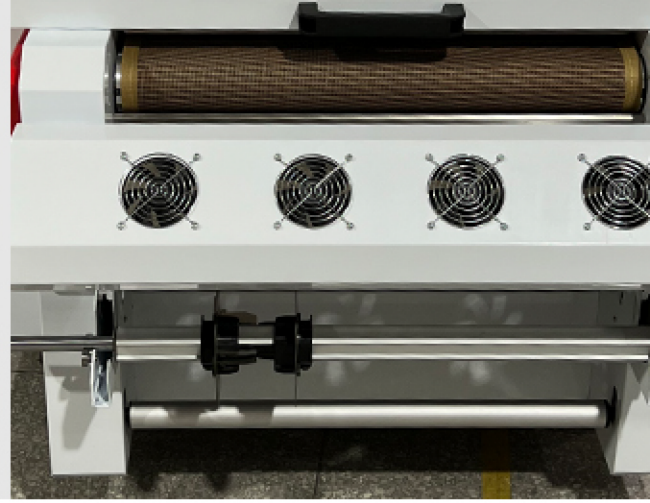


Smart PLC Touch Screen

Equipped with an easy-to-use touch screen. Navigate the menu by simply touching the desired option.

Tension Feed/Take-up Reel

The paper feed and take-up with tension system allows you to complete production unattended for a simple and precise workflow from printing to loading and feeding through the roll-to-roll securely wound.

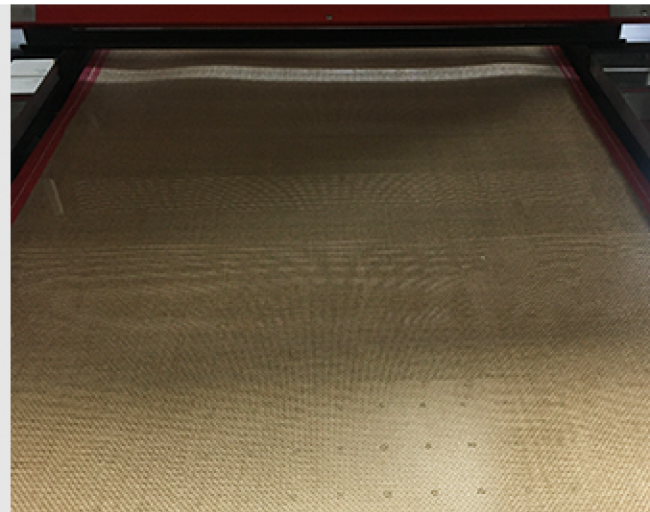


Infrared Drying

Adjustable temperature infrared and heating drying improves and protects color reproduction.

Suction Conveying System

Vacuum adsorption conveying platform, absorbing the print material to ensure that the material does not bulge or run off.



Integrated Purifier

Integrated purifier for the option to replace of exhaust pipe make the use of the machine more convenient.



APPLICATION

Discover the Print Difference

