



ON-DEMAND PRODUCTION OF LABEL & PACKAGE
IN RIGHT TIME, RIGHT PLACE & RIGHT QUANTITY

SIGGRAPHIC
DET SMARTA VALET

ROLL-TO-ROLL MULTI-BLADE
DIGITAL LABEL DIE-CUTTER

DUOBLADE SX

UPGRADED



DuoBlade SX is the most affordable digital label finishing machine with sophisticated controllability at commercial level quality and speed.

No. of cutting head	Cutting speed
1	1X
2	2.5X
3	4X
4	6X

FEATURE



MULTI BLADE (MAX. 4 UNITS)

Faster by multi-blade (default 2)
Independent control of each blade
Full-cut & kiss-cut at the same time
Powerful servo-driven X-Y motions



INLINE COLD LAMINATING

Embedded cold laminating unit
Simultaneous registration control using fine adjustment knob at the bar end
Use of self-supported laminating film



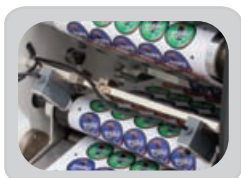
INTUITIVE CONTROL PANEL

Orderly man-machine interface
Multi-lingual LCD touch panel
Easy access to control blade pressure, cutting position, speed and etc.



INLINE SLITTING & SEPARATION

Supporting up to 15pcs slitters (default 4)
Individual control of depth and position
Simultaneous registration control of all slitters together using fine adjustment knob



WEB GUIDE SYSTEM

Default embedded web guide system to correct media feeding straightness
Guaranteed constant accuracy in slitted mini rolls after slitting.



MEDIA CONNECTING PLATE

Embedded edge-to-edge connecting plate
Easy installation of new rolls with keeping straight feeding path in stable way
Minimized loss and media installation time



AUTO TENSION CONTROL

Magnetic powder brake for each of unwinder and 2 rewinders
Electrical control of individual tensions on the LCD panel easily and precisely.



PNEUMATIC EXPANSION ROLLERS

One touch push buttons on side panel to load and unload media rolls easily
Pneumatic expandable bobbins applied in each of unwinder and 2 rewinders



ON-DEMAND PRODUCTION OF LABEL & PACKAGE
IN RIGHT TIME, RIGHT PLACE & RIGHT QUANTITY



SPECIFICATIONS OF DUOBLADE SX

PERFORMANCE	ALL INCLUSIVE	SPECIAL	USER-FRIENDLY
Multi-blade Up to 4 Heads	Laminating Unit & Matrix Removal	Web Guide Control System	TCP/IP Interface
Max 5.5m/min Cutting Speed	Slitting Unit up to 15pcs	Split-Cut for long label	USB Memory
2mm Accuracy Tolerance	2nd Rewinder as default	Full & Kiss-cut at the same time	Cut & Connect Media Plate
Max 80m/min Slitting Speed	Trimming	Exclusive Slitting mode	Phenumatic Core Expansion
		Electric Tension Control System	Realtime Control Speed & Pressure

- Exclusive control software
- Supporting Corel & Illustrator
- Vacuum bed by air pump
- Media width 40~340mm
- Max. roll diameter 450mm
- Cutting area 320 x 420mm
- Cutting speed max. 5.5/min
- Cutting precision 0.2mm
- Slitting speed max. 80m/min
- Slitting width 10 ~ 330mm
- Slitting precision 0.2mm
- Tungsten steel rotary blade
- Power 100 ~ 240 VAC, 1KW
- High Capa 750w X-Y Servo
- Size 158 x 90 x 136 cm³
- Weight 450kgs

Vacuum pad for accurate registration



Cutting by multi cutting heads up to max.4pcs



Easy waste removal



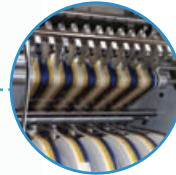
Fine position control of all slitters together



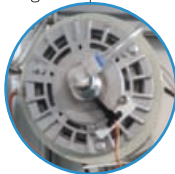
Laminating unit with fine control knob



Slitting units up to max.15pcs



Individual tension control by magnetic powder brake



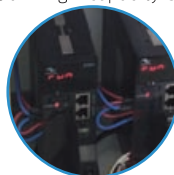
Web guide sensor with fine control knob



Push buttons for shaft expansion and tension



X-Y motion control by 750W High-capacity Servo



Cut & Connect Media plate



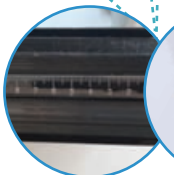
Touch screen control panel



Vacuum pump



Pneumatic shaft with ruler



LAN : Remote control
USB : Computerless work



Huvudkontor
SIGGRAPHIC KB
Arenavägen 29
121 77 Globen/Johanneshov

Besöksadress
Storgatan 79
362 30 Tingsryd

Telefon
+46 (0) 477 100 04
Hemsida
www.siggraphic.se

E-post
marknad@siggraphic.se